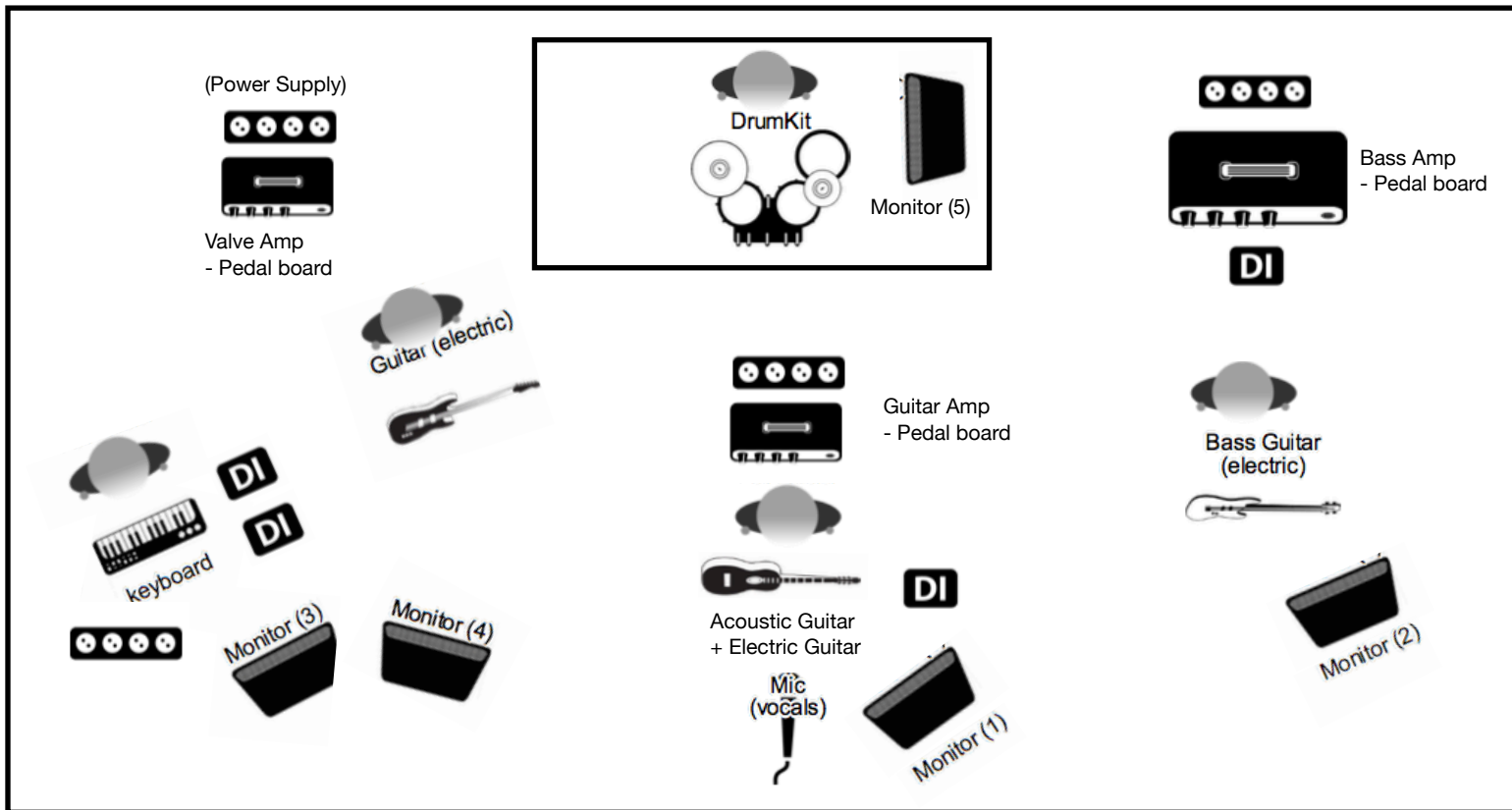


ISOBEL HOLLY

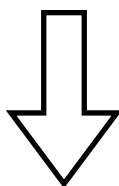
TECH SPEC



	NAME	PROVIDED	REQUESTED
VOCALS	ISOBEL HOLLY contact@isobelholly.com 07931777731	GUIPARS GUITAR AMP PEDAL BOARD	POWER SUPPLY DI MIC STAND DYNAMIC MIC (VOCALS)
KEYS	CORBEN LAMB corben@thesoundparlour.com 07546982674 (Contact for tech enquiries)	KEYBOARD	POWER SUPPLY 2 DIs
GUITAR	CHRIS LARCOMBE 07365229246	GUITAR VALVE AMP PEDAL BOARD	POWER SUPPLY
BASS	BEN TRUMAN 07925836340	BASS BASS AMP PEDAL BOARD	POWER SUPPLY DI
DRUMS	SAM HEELY 07484378285	DRUM KIT	

INPUT	DESCRIPTION	MIC/DI REQUESTS
1	KICK DRUM	SHURE BETA 52A
2	SNARE BOTTOM	SHURE SM-57
3	SNARE TOP	SHURE SM-57
4	HI-HAT	CONDENSER
5	RACK TOM 1	SENN 504/604
6	RACK TOM 2	SENN 504/604
7	FLOOR TOM 1	SENN 504/604
8	OVER HEAD LEFT	CONDENSER
9	OVER HEAD RIGHT	CONDENSER
10	BASS GUITAR	DI
11	VALVE AMP	SHURE SM57
12	KEYS LEFT	DI
13	KEYS RIGHT	DI
14	ACOUSTIC GUITAR	DI
15	GUITAR AMP	SHURE SM57
16	GUITAR AMP	SHURE SM57
17	VOCAL MIC	SHURE BETA 58A

FULL PAGE STAGE PLOT



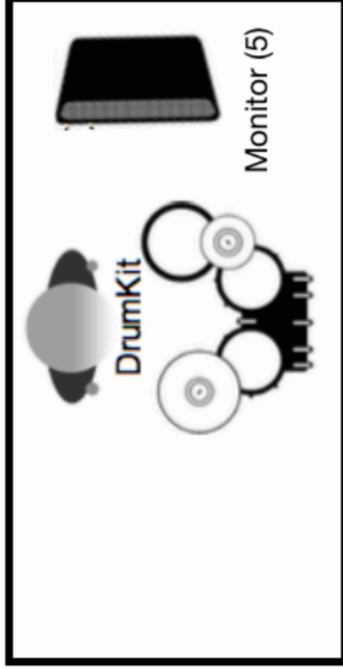
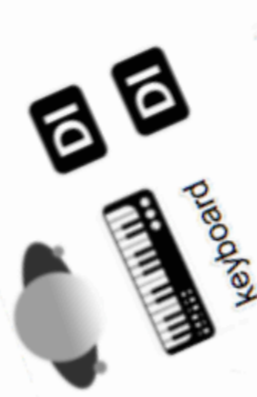
(Power Supply)



Valve Amp
- Pedal board



Guitar (electric)



DrumKit

Monitor (5)



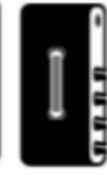
Bass Amp
- Pedal board



Bass Guitar
(electric)



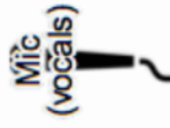
Monitor (2)



Guitar Amp
- Pedal board



Acoustic Guitar
+ Electric Guitar



Mic
(vocals)



Monitor (1)